

**# 8C.063**  
EN 12277  
(on request)



bag included

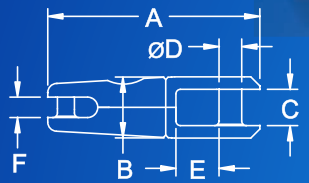
# YACHTING NEWS 2010

# SWIVEL ANCHOR CONNECTORS

STAINLESS STEEL AISI 316



UP TO  
**3/4" CHAINS** (20mm)  
UP TO  
**150 KG ANCHORS**



mm	A mm	B mm	C mm	ØDmm	E mm	F mm	USE	g	
644.08	6÷8	93	28	16	10	19	2500 Kgf*	850 Kgf*	240
644.10	8÷12	117	36	22	13	23	5000 Kgf*	2000 kgf*	550
644.12	12÷14	155	66	35	18	30	9500 Kgf*	3000 kgf*	2350
644.16	16÷20	190	86	43	22	42	20000 Kgf*	5000 kgf*	5000

\* 1 Lbsf = 0,450 Kgf

# ELASTIC TETHERS



CE EN 1095  
22 kN

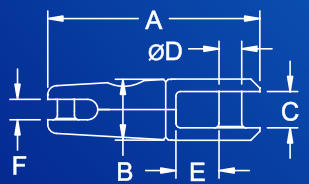


# FIX ANCHOR CONNECTORS

STAINLESS STEEL AISI 316



CARBON STEEL



mm	A mm	B mm	C mm	ØDmm	E mm	F mm	USE	g	
444.8	6 7 8	80	28	16	10	19	2.500 Kgf*	850 Kgf*	180
643.8	6 7 8	80	28	16	10	19	2.500 Kgf*	850 Kgf*	180
444.10	8 10 12	100	37	22	13	23,5	5.000 Kgf*	2.000 Kgf*	410
643.10	8 10 12	100	37	22	13	23,5	5.000 Kgf*	2.000 Kgf*	410
444.12	12 13 14	144	55	31	26	16	9.500 Kgf*	3.000 Kgf*	1.440

\* 1 Lbsf = 0,450 Kgf

# MOORING HOOK



# 650.201



STAINLESS STEEL AISI 316



CE EN 795/B  
24 kN  
590 g